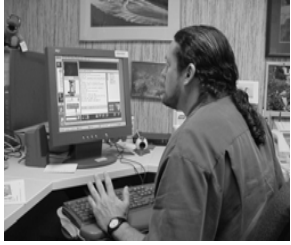


# Transformations: The Exhibition



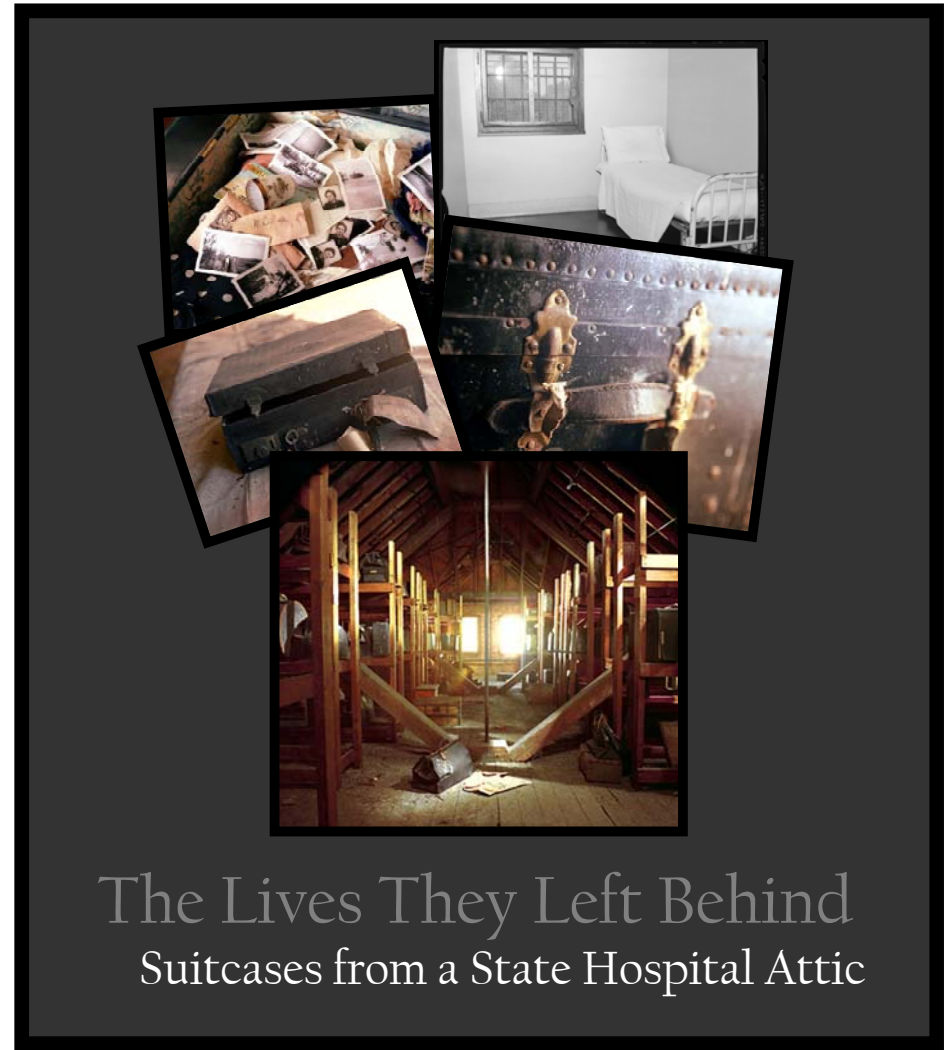
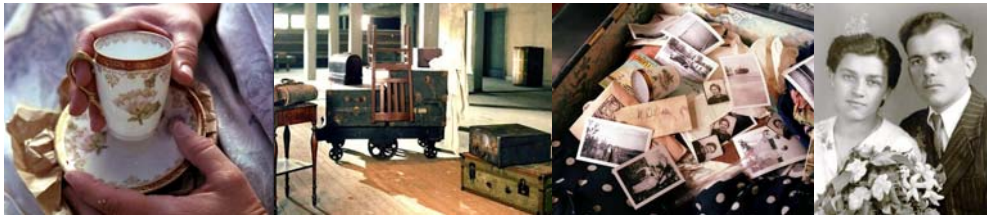
ShandsVista  
Behavioral Health



The Transformations exhibition combines the traveling exhibit *The Lives They Left Behind* with historical insights and a study of care facilities and programs for treating mental illness in the Gainesville, Florida area.

These different components show how our understanding of mental illnesses and treatments for these conditions changed dramatically, especially in the past 100 years. While patients could be sent to the Willard facility and remain there for life, now we focus on treating and bringing back into the community those with such a diagnosis.

Instead of leaving their lives behind, psychiatric patients increasingly receive treatments that help them retain rather than lose their humanity.



The Lives They Left Behind  
Suitcases from a State Hospital Attic

at the UF HSC Library through November 21<sup>st</sup>

Sponsored by

NAMI Gainesville, an affiliate of the National Alliance on Mental Illness; Dr. Bruce Stevens; The Chapman Chapter of the Gold Humanism Honor Society; and The Thomas Maren Foundation Fund.

